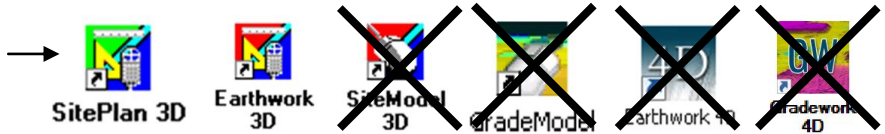


Program Overview Requirements for Paper Plan Digitizing

The following software and hardware requirements apply to digitizing from paper plan sheets (see next page for working with PDF plan sheets) . . .

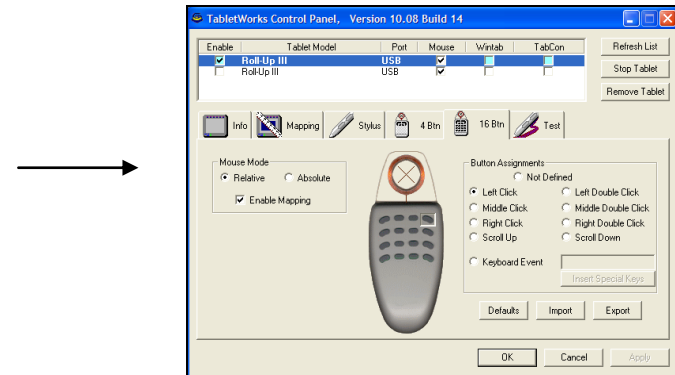
- Support for manual digitizing from paper plans is standard with AGTEK's **Earthwork 3D** and **SitePlan 3D** products (but paper digitizing is not supported by the **SiteModel 3D** and **GradeModel 3D** products). The old **Tablet 4D** paper digitizing option is not supported in current versions of **Earthwork 4D** and **Gradework 4D**.



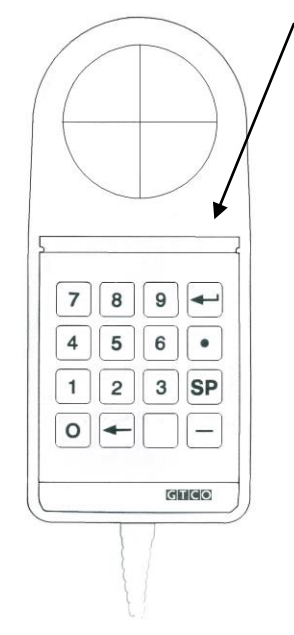
- A GTCO Rollup digitizing tablet with 16-button cursor is used to “trace” lines and enter elevations from paper plan sheets (AGTEK-compatible digitizers and 16-button cursors can be purchased from GTCO CalComp and used AGTEK digitizers are occasionally listed on eBay).



- GTCO's **TabletWorks** driver and setup software must be installed and properly configured. **TabletWorks** was automatically installed with the AGTEK 3D products, but users must configure the 16-button cursor keys for proper use—see *Section 1* of the **Earthwork 3D** user manual (or *Section 6* of **Sitework 4D**'s manual at <https://agtek.s3.amazonaws.com/Agtek/n4gNNTe6WDM>). For GTCO resource links, see www.EarthworkSoftwareServices.com/resourcesw.htm#gtxco.



- In rare circumstances, a software conflict may require that a user disable/re-enable the **TabletWorks** process in Windows; see www.EarthworkSoftwareServices.com/downloads/disable.pdf for details.
- In order to use the digitizer with paper plans, the **Tablet Entry** option must be enabled in AGTEK (select **Options > Tablet Entry** from AGTEK's menu to enable/disable **Tablet Entry**).
- Conductive materials (including paper plans plotted with conductive ink) or electronic devices on, under, or near GTCO's Roll-Up style digitizers can interfere with the digitizer's operation. A work-around for plan sheets plotted with conductive ink is to digitize from a copy of the plotted sheet (or scan it to PDF).
- Scaling single and multiple paper plan sheets is covered in *Appendix F* (page 309) and *Appendix G* (page 317); steps for manual digitizing from a scaled paper plan sheet begin on page 80.



The 16-Button Cursor's Keys:

- Pick objects and enter data points
- Type numeric decimal point or *daylight* elevation code
- Match horizontal and vertical point values when *snapping* (same function as **F8 snap** and **Left-click Mouse Snap**)
- Type negative/subtractive values
- End data entry, change Entry pointer from **Crosshair** to **Arrow** , and display **Right-click** menu (same function as **Right click** on mouse)
- Delete last point
- Type numeric values