

Appendix I Geo-Reference Job File with Google Earth

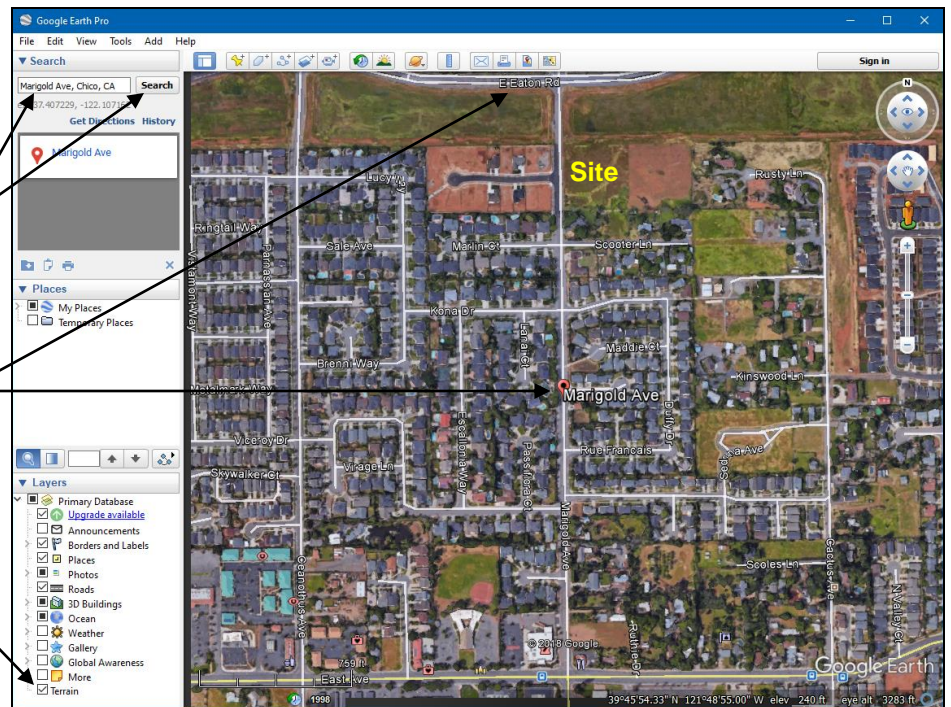
Geo-referencing Notes

- Geo-referencing an AGTEK job file is optional but it enables (1) remote site inspection in **Google Earth** (via KMZ export of plan sheets, AGTEK layer data and AGTEK cut-fill maps) and (2) on-site inspection with AGTEK's **SmartPlan** app (see video at www.agtek.com/video.html?id=418).
- The geo-referencing function is available in **AGTEK 4D** and **GradeModel 3D** (it was an added-cost option in **SiteModel 3D**).
- Geo-referencing with the steps below requires an internet connection and installation of **Google Earth** on the AGTEK computer (see www.earthworksoftwareservices.com/resources.htm#GEPro for free **Google Earth Pro** download and tutorial links).
- The job file can be geo-referenced at any time after importing and scaling the first PDF plan sheet.
- An example of the PDF geo-referencing procedure and KMZ export is provided in AGTEK's training video at www.agtek.com/video.html?id=388 (see page 293 for more links to videos with additional examples and details).
- See pages 137-138 and 291-293 for examples of exporting KMZ data and viewing it in Google Earth.



Step 1: Look at the project's plan sheets to identify the site location (a location map is often provided on the title page). In the *Pine Street* example, a location map is found on the *Existing Conditions* plan (see map above) and we can see that this site is located on Marigold Ave. (just south of Eaton Rd.) in Chico, Calif.

Step 2: Start Google Earth and search for the site. In this example we type "**Marigold Ave, Chico, CA**" in the search field then click the **Search** button. The search gets us very close to the site (the **Placemark** icon marks Marigold Ave. at center of screen, and Eaton Rd. is at top of screen).



Tip: If **Terrain** in the *Layers* sidebar is checked, elevation at the **Hand** cursor position will display at bottom right of screen; however, depending on the site's location, the most recent aerial imagery may not be shown (uncheck **Terrain** to verify—see newer images on next page). **The site images here are from 4/2016 (this page) and 5/17/2018 (pages 350-353).**

Elevation at Hand cursor 349