

Appendix A

How to Get Help, Training, and Program Updates

Getting Help

An overview page for AGTEK's help and support options is located at [agtek.com/services-support/](https://www.agtek.com/services-support/) and AGTEK's webinar video at www.agtek.com/video.html?id=566 includes a segment covering features of the *AGTEK Community* support site. Options for getting help when using AGTEK software include . . .

Program Help Files and Guides: Select **Help > [AGTEK Program Name] Help** from the main menu to access AGTEK's help files. Help files are also accessible on the web at www.agtek.com/help/sw/earthwork4dhelp.htm for **Earthwork 4D** and www.agtek.com/help/gw/gradework4dhelp.htm for **Gradework 4D**. Select **Guide** from the main menu to access various *Guide* dialogs with interactive checklist steps for basic modeling and takeoff applications (see pages 23-25).

YouTube and LinkedIn: Visit **AGTEK's YouTube Channel** at www.youtube.com/c/AGTEKDirtySimpleSolutions/videos for free access to numerous *Tech Tip* videos. Join the **AGTEK Users Group** at www.linkedin.com/groups/2015287/ to ask questions and exchange ideas with other AGTEK users (don't rely on this option for quick replies).

AGTEK Customer Support for Licensed Users:

A. Technical Videos Library Login with Support *Username* and *Password* at agtek.my.site.com/community/s/training-self-paced for full access to AGTEK's library of technical videos (see page 185).

B. Call AGTEK's toll-free technical support line at (800) 248-3527 (5:00 AM - 5:00 PM PST) [during support hours, user's support call messages are promptly returned in the order received].

C. Use the AGTEK Community site's **Contact Support form to submit questions and upload corresponding data files via the steps listed here ...**

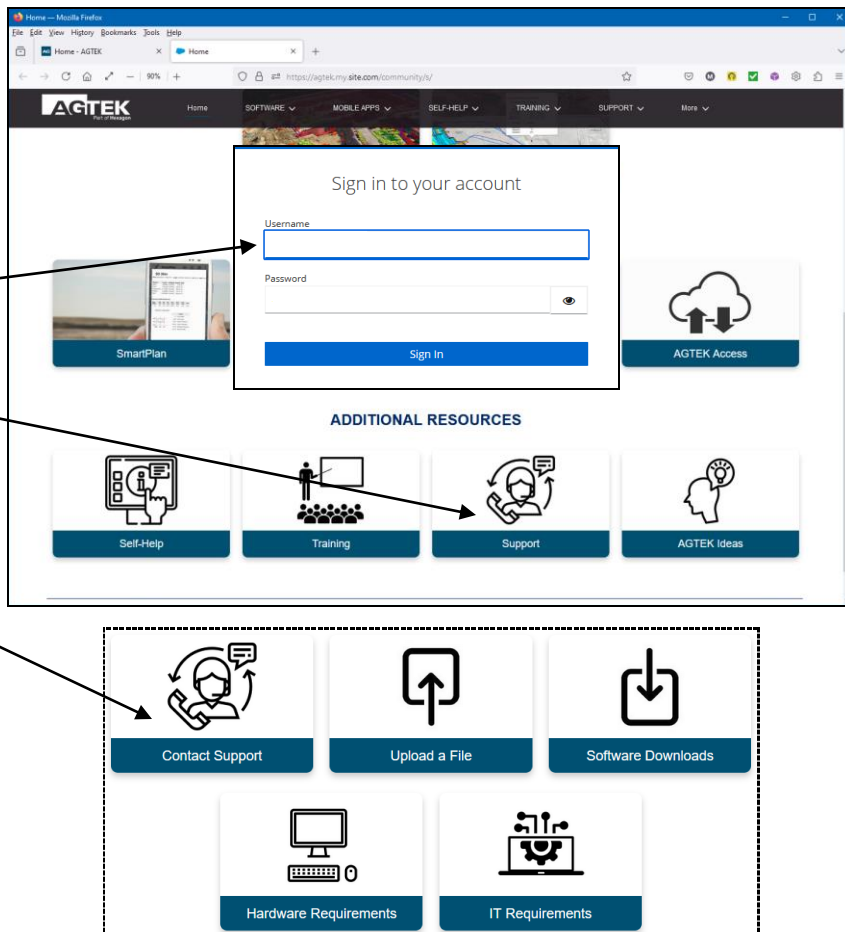
Step 1: Go to the *AGTEK Community* site at agtek.my.site.com/community/s/ (users can access the site by selecting **Help > AGTEK Community** from the main menu in **AGTEK 4D**).

Step 2: If the *Sign In* dialog displays, enter Support *Username* and *Password* then click **Sign In**.

Step 3: Scroll down the page to **Additional Resources** then click the **Support** option.

Step 4: On the *Support Home* page, click **Contact Support** [*Support Home page link is agtek.my.site.com/community/s/homepage-support*]

Steps continue on next page ...



Appendix A

How to Get Help, Training, and Program Updates

Getting Help (Cont.)

Step 5: On the *Contact Support* page, use one of these two options ...

- If data files will not be included, complete the *Contact* form, adding descriptive details for the question/problem, then click **Submit**.
- If data files will be included with the question/problem, click **Send IT** below the *Contact* form to access the **Send IT Filedrop** app [*Send IT* can also be accessed by clicking **Upload a File** in Step 4]. Complete the *Filedrop* information (**From**, **Subject** and **Message**), add the data files (529 GB max) then click **Send**.

Note: Support questions can also be emailed to *AGTEK Support* at support@agtek.com (but large file attachments should be sent via **Filedrop** rather than by email—see **Transferring Large Data Files** below).

Transferring Large Data Files

Large data files sent via email may not be delivered. Options include:

Compress File Attachments
 AGTEK includes a built-in “zip” compression option for ESW job files. A currently open ESW file is compressed to a standard ZIP format with an ESZ name extension (select **File > Save As** from the menu and set **AGTEK SiteWork Zip Files (*.esz)** as the *Save as type*). The resulting ESZ file is also readable by AGTEK. **AGTEK 4D** users have the option to include background images in the ESZ file (see AGTEK’s ESZ video at <https://bit.ly/3R8R0ly>).

AGTEK Support Filedrop
 AGTEK’s **Send IT** app makes it easy to transfer up to 529 GB of data to *AGTEK Support* – try it at <https://sendit.hexagon.com/filedrop/support@agtek.com> (AGTEK Support login required).

Email File-Share Link
AGTEK 4D’s AGTEK Access file-sharing utility creates share links for any file type (similar to *Dropbox*). See AGTEK’s video at www.agtek.com/video.html?id=561 (@ 2:49 min mark).