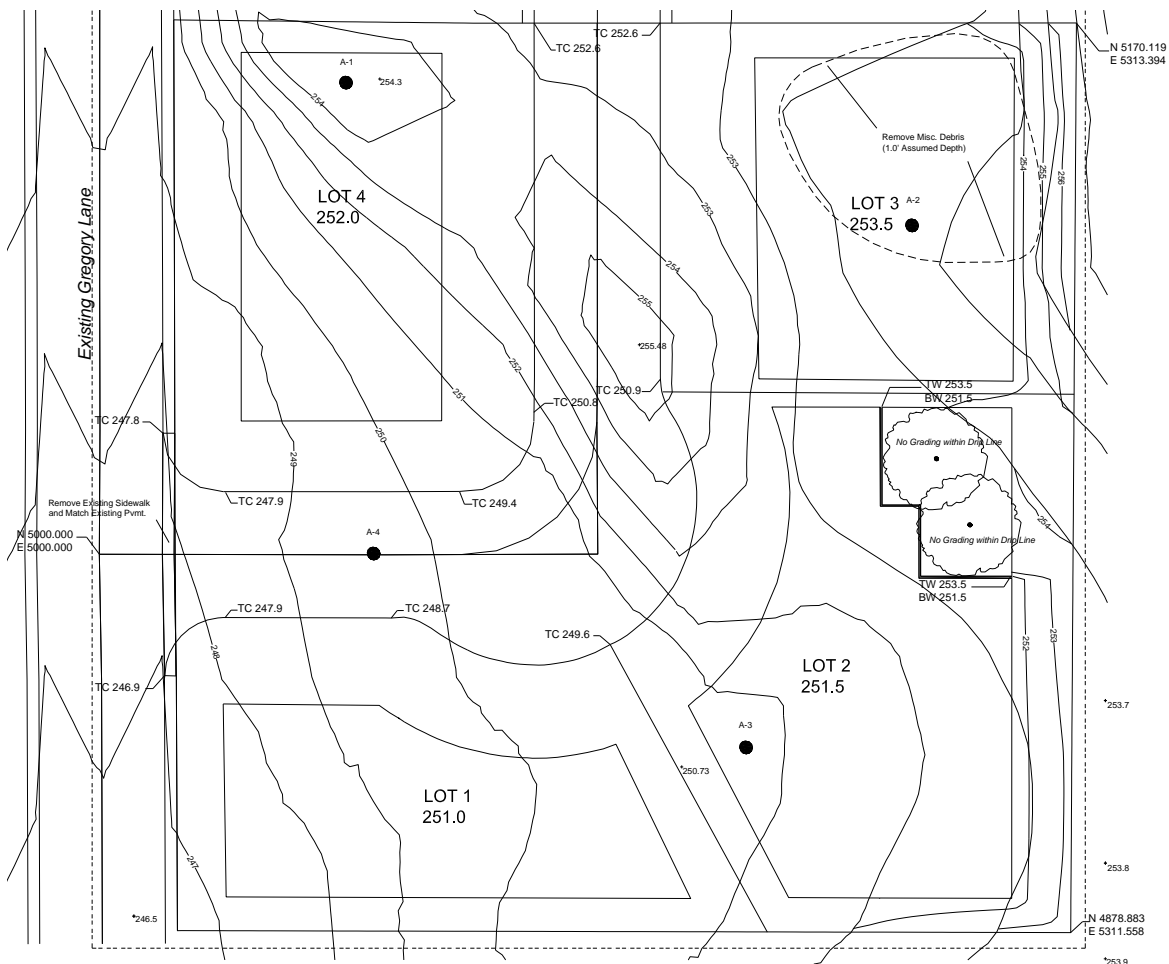


# Modeling Subsurface Strata Sample Strata Bore Map and Bore Logs

Our first exercise covers the fundamentals of modeling strata layers based on the following sample bore map and bore logs . . .



A-1 Bore Log		
Level	Depth	Description
1	0.0' to 0.4'	Topsoil
2	0.4' to 1.9'	Soil
3	1.9' to 4.2'	Weathered Rock (Refusal)

A-3 Bore Log		
Level	Depth	Description
1	0.0' to 0.6'	Topsoil
2	0.6' to 2.3'	Soil
3	2.3' to 5.6'	Weathered Rock (Refusal)

A-2 Bore Log		
Level	Depth	Description
1	0.0' to 1.1'	Debris
2	1.1' to 3.4'	Soil
3	3.4' to 5.0'	Weathered Rock (Terminated)

A-4 Bore Log		
Level	Depth	Description
1	0.0' to 0.7'	Topsoil
2	0.7' to 5.0'	Soil (Terminated)

An additional copy of this plan sheet is provided on page 287 and a corresponding PDF plan (*PStrataPlot.pdf*) is available for download at [www.earthworksoftwareservices.com/resourcefiles.htm](http://www.earthworksoftwareservices.com/resourcefiles.htm) (see Appendix C).