

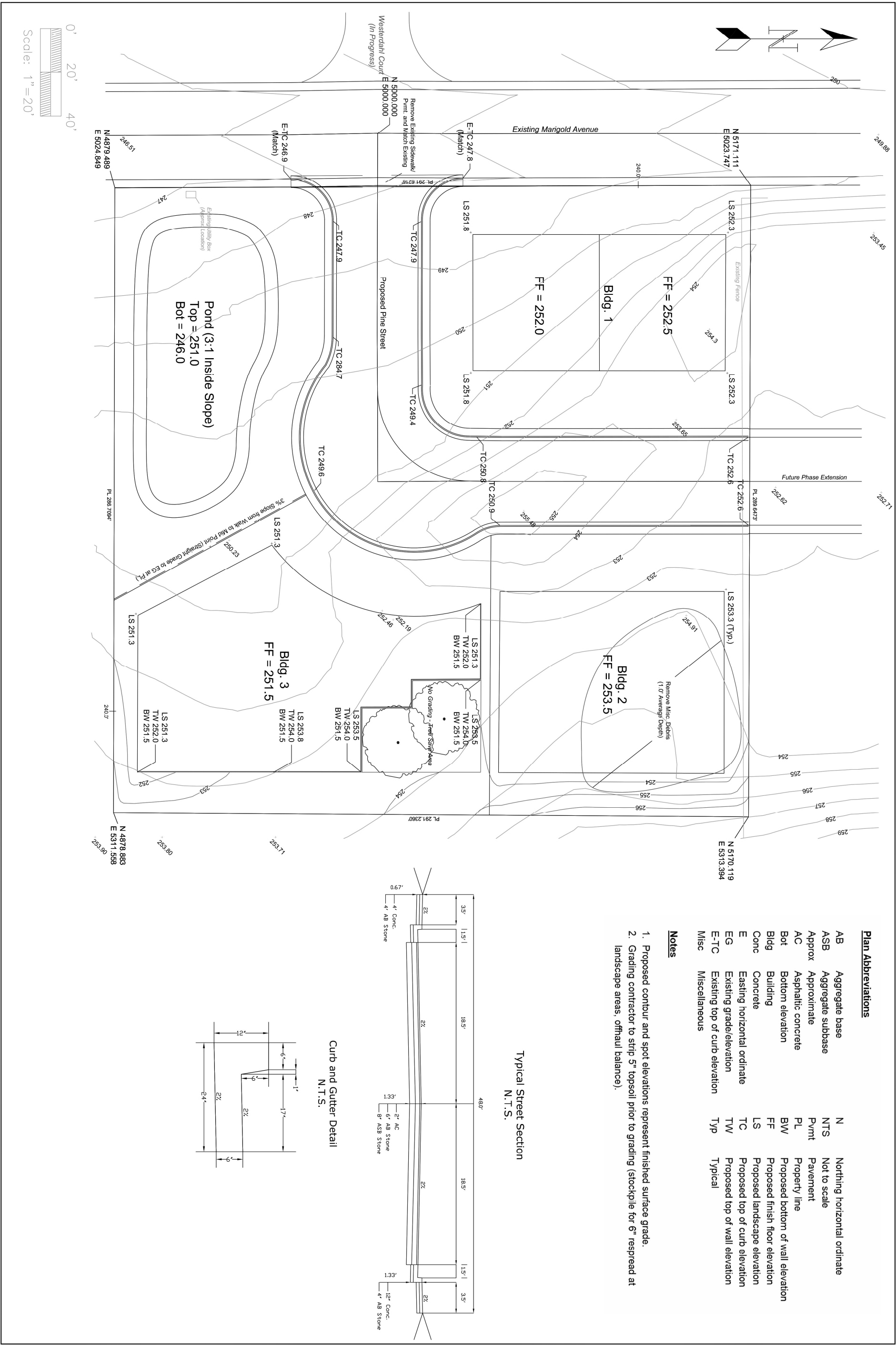
Site Location Map  
(Chico, California)


# Pine Street Existing Conditions

Scale

1" = 20'

Revised



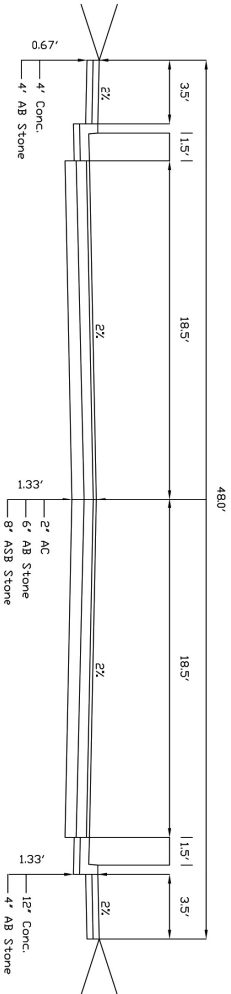
Plan Abbreviations

AB	Aggregate base	N	Northing horizontal ordinate
ASB	Aggregate subbase	NTS	Not to scale
Approx	Approximate	Pvmt	Pavement
AC	Asphaltic concrete	PL	Property line
Bot	Bottom elevation	BW	Proposed bottom of wall elevation
Bldg	Building	FF	Proposed finish floor elevation
Conc	Concrete	LS	Proposed landscape elevation
E	Existing horizontal ordinate	TC	Proposed top of curb elevation
EG	Existing grade/elevation	TW	Proposed top of wall elevation
E-TC	Existing top of curb elevation	Typ	Typical
Misc	Miscellaneous		

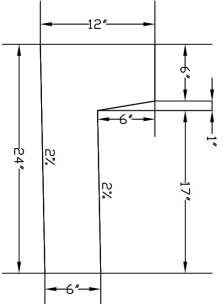
Notes

- Proposed contour and spot elevations represent finished surface grade.
- Grading contractor to strip 5" topsoil prior to grading (stockpile for 6" respread at landscape areas, offhaul balance).

Typical Street Section  
N.T.S.

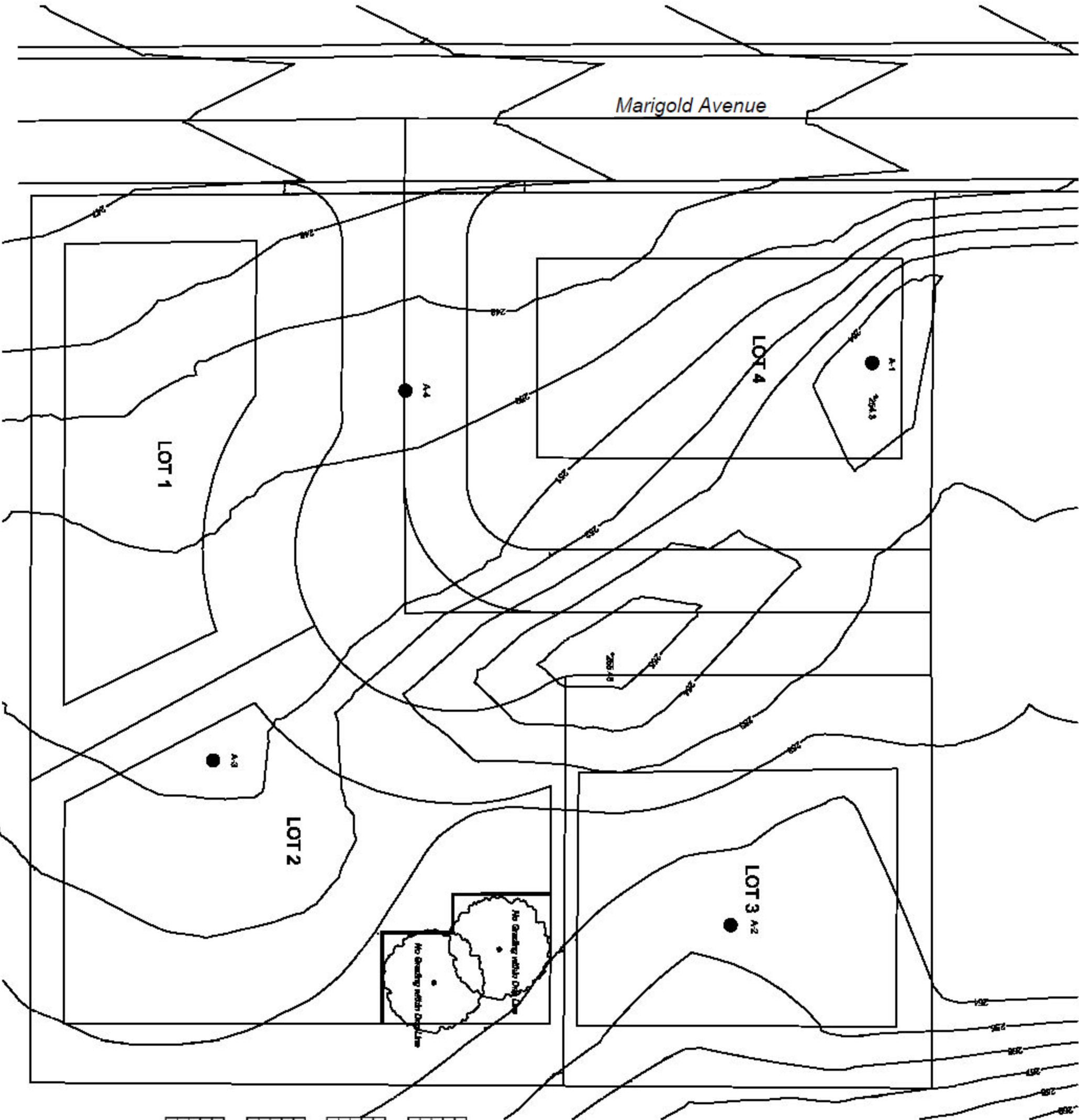


Curb and Gutter Detail  
N.T.S.



# Pine Street Grading Plan

Scale
1" = 20'
Revised
7/10/2019



A-1 Bore Log		
Level	Depth	Description
1	0.0' to 0.4'	Topsoil
2	0.4' to 1.9'	Soil
3	1.9' to 4.2'	Weathered Rock (Refusal)

A-2 Bore Log		
Level	Depth	Description
1	0.0' to 1.1'	Debris
2	1.1' to 3.4'	Soil
3	3.4' to 5.0'	Weathered Rock (Terminated)

A-3 Bore Log		
Level	Depth	Description
1	0.0' to 0.6'	Topsoil
2	0.6' to 2.3'	Soil
3	2.3' to 5.6'	Weathered Rock (Refusal)

A-4 Bore Log		
Level	Depth	Description
1	0.0' to 0.7'	Topsoil
2	0.7' to 5.0'	Soil (Terminated)